

Combat Air – Maximising Effects

- Innovation
- Built-in at the design phase
- Optimised survivability
- Some trends

Day Zero, London, 9 September 2019

Andrew Walton, Head of Saab UK



Saab – Full Spectrum, Global, Export Based



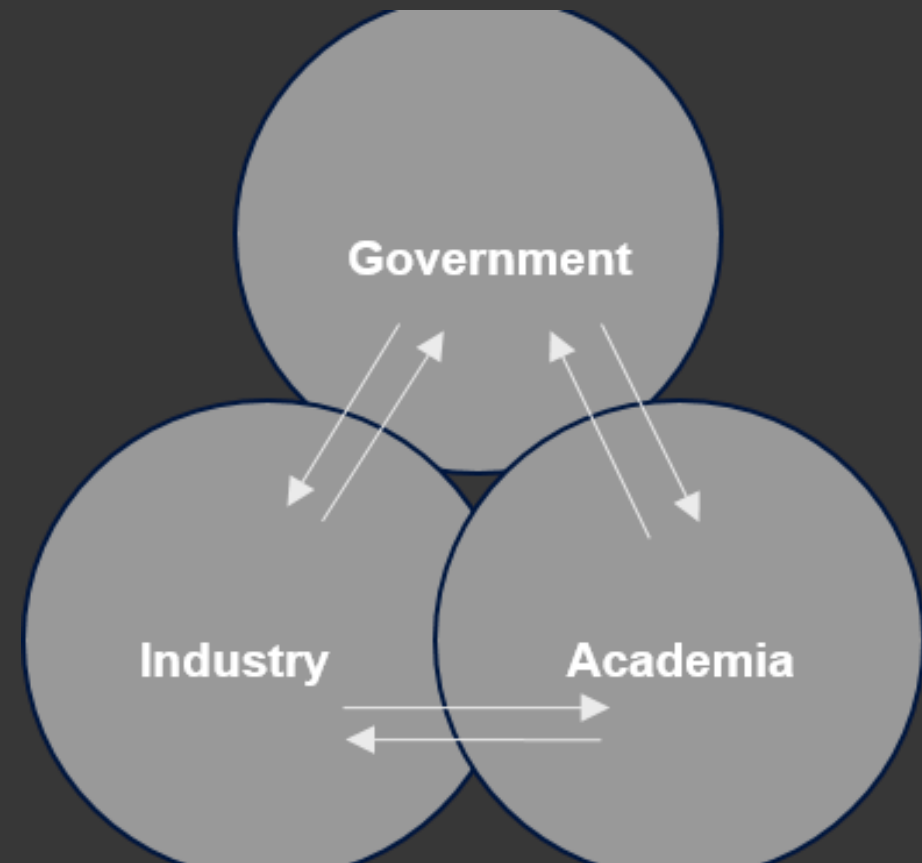
Innovation in a Triple Helix Collaboration

Innovation contributes to national economy growth

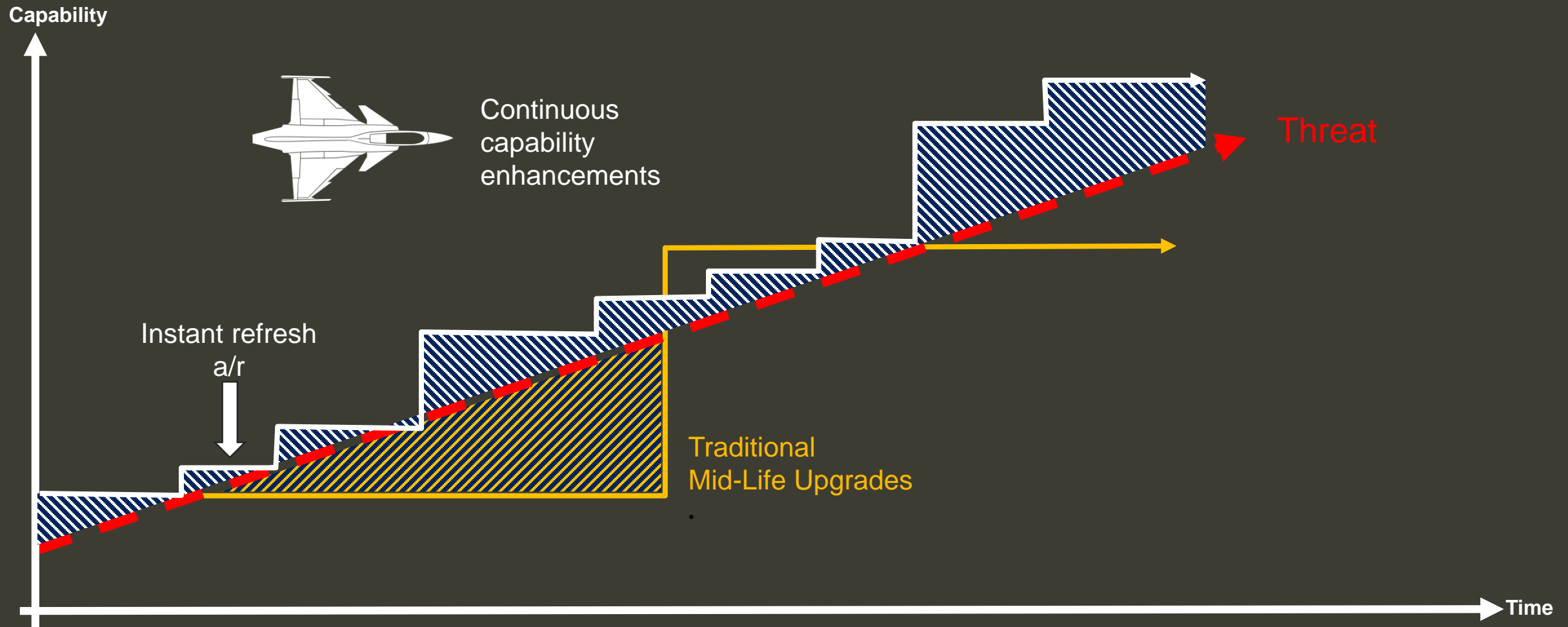
Triple helix is an innovation system that fosters results by joining forces between the stakeholders

It coordinates strategic directions, programmes and funding for technology paths in technology areas of joint interest

It also combines and spreads technologies that generate new formats for production and transfer and application of the knowledge base in dual use and multiple use



Growth Built In at the Design Phase – and Through Life



Optimised Survivability – The Arexis EW Family

AI + computing + EW techniques + sensors = optimised survivability...

A2AD BUBBLE

STAND OFF JAMMING

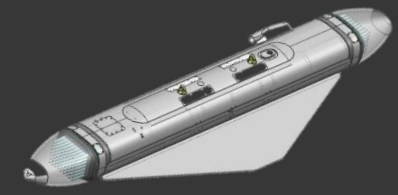
ESCORT JAMMING

SELF-PROTECTION JAMMING

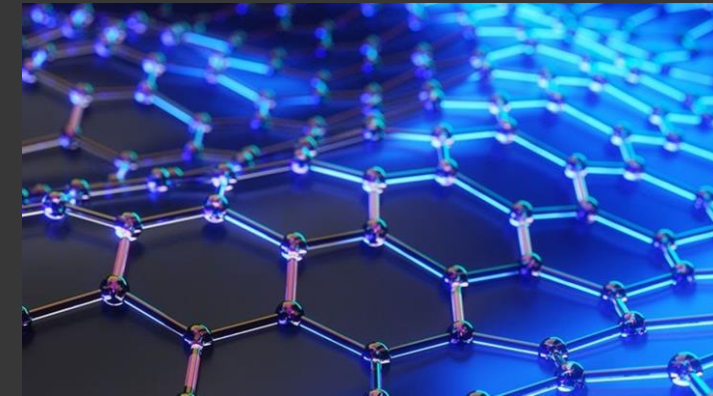
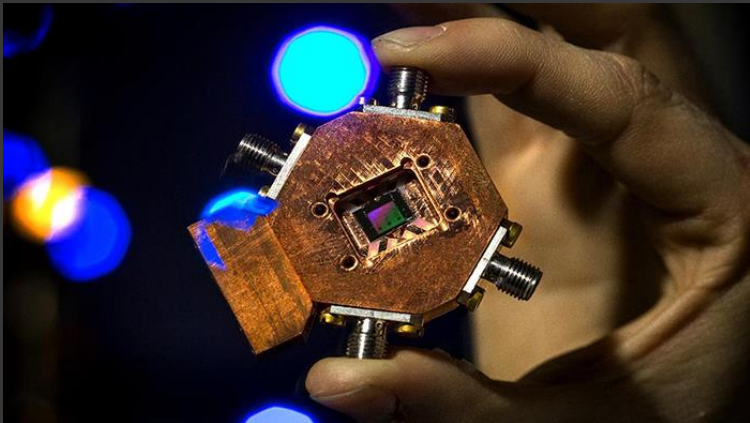
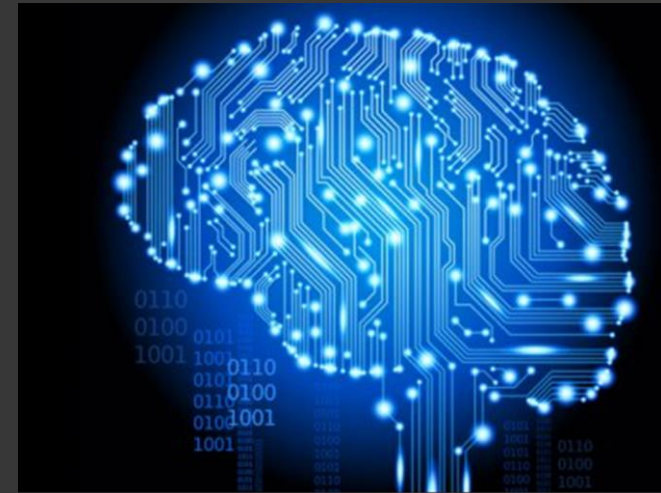
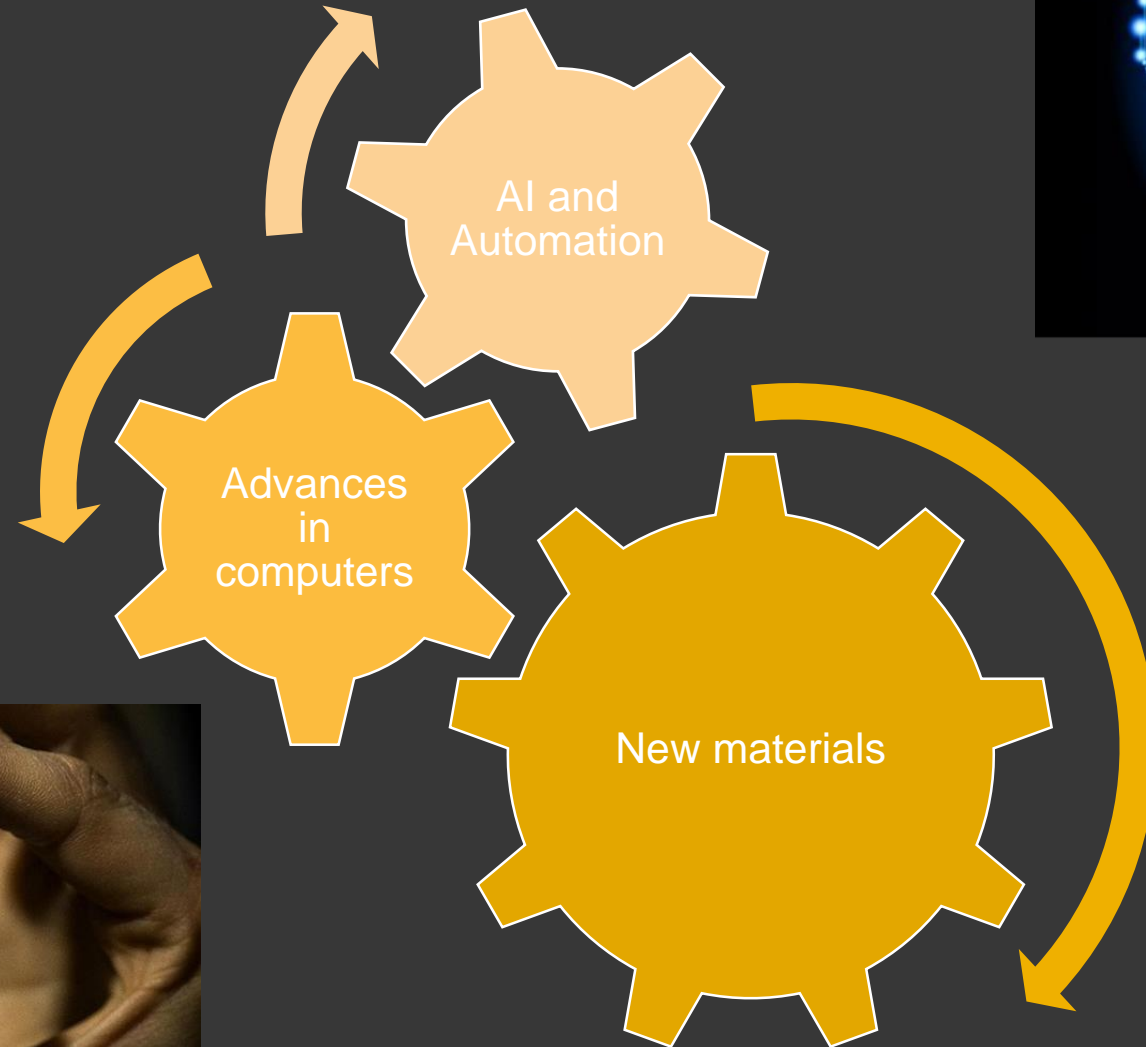
STAND IN JAMMING

IADS & GBAD

Distance [km]



Some Trends



The background of the slide features a large, stylized Saab logo on the left, which is an oval containing a crowned griffin head and the word 'SAAB' at the bottom. To the right of the logo, the word 'SAAB' is written in large, bold, outlined letters. The entire background is dimmed and has a dark grey overlay.

In summary

- Built-in at the design phase should include through life adaptability and agility, including supporting commercials
- Optimised survivability will require a systems approach that is networked, as well as being agile and adaptable

Thank You